

EVELETH SPURS

Yellow Design Studio | yellowdesignstudio.com

1

To add a spur, type one of the following letters:

Left Side Spurs

- H** - vertical spur, matches most characters
- A** - angled spur matches angle of the A
- S** - angled spur matches angle of the S
- V** - angled spur matches angle of the V
- W** - angled spur matches angle of the W
- Z** - angled spur matches angle of the Z

Right Side Spurs

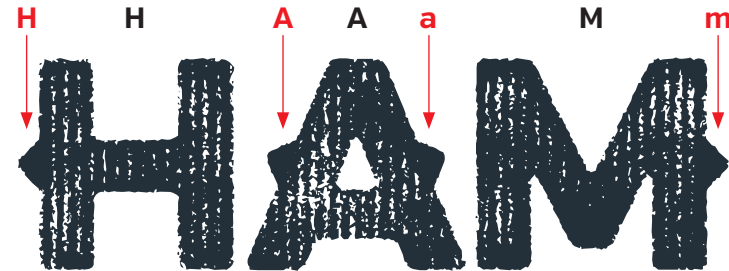
- h** - vertical spur, matches most characters
- a** - angled spur matches angle of the A
- s** - angled spur matches angle of the S
- v** - angled spur matches angle of the V
- w** - angled spur matches angle of the W
- z** - angled spur matches angle of the Z

2

Select the spur letter and activate either Stylistic Alternate, Swash, or Stylistic Set 1 opentype features. [They all work the same.]

3

Kern the spur to the letter until touching.



Note: not all angled letters are well suited for spurs, in which case no specific spurs are provided.